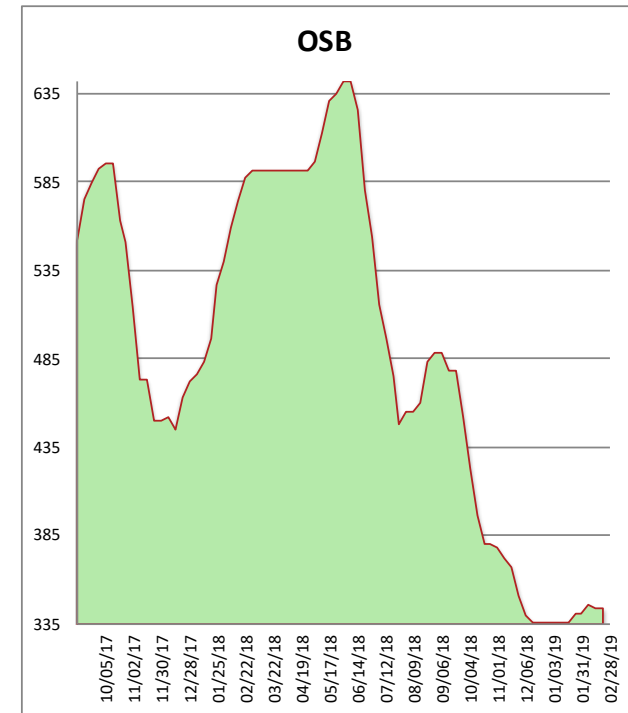
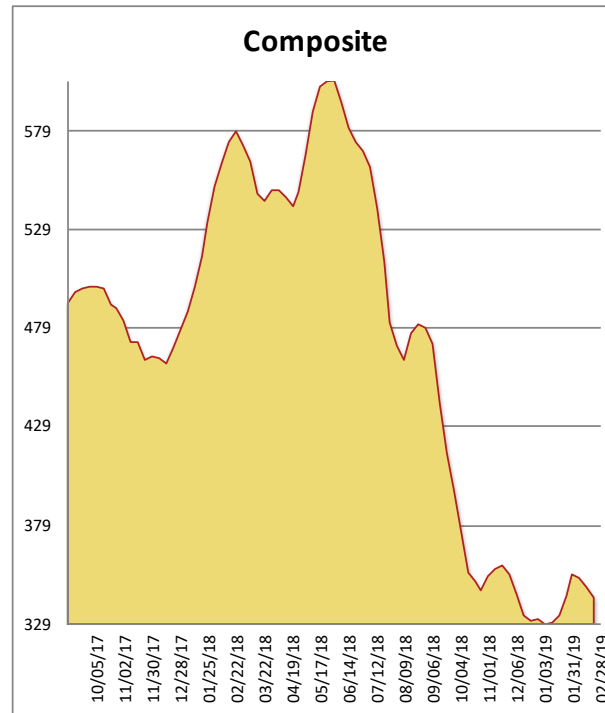


All items are priced as a general market guide. Please call our sales office for specific quotes in your respective market.

	This Week	Weekly Change	Last Year
2x4 2/BTR DF S-GRN	311	-10	614
2x6 2/BTR DF S-GRN	354	-13	628
2x10 2/BTR DF S-GRN	312	-4	582
4x12 2/BTR DF S4S	380	0	590
2x4 921/4 2/BTR DF S-GRN	319	0	477
2x4 1041/4 2/BTR DF S-GRN	331	-5	573
2x4 2/BTR SPF KD	391	-11	543
4X8 15/32 OSB	249	0	473
4X8 23/32 OSB T&G	438	0	676
Composite Average	343	-05	573

Prices are F.O.B. mill, excluding freight



Trading slowed dramatically across the country as wintery weather continued to suppress demand. Distributors became more reluctant to put wood on the ground at these levels for fear of downside risk. A two tiered market has developed as mills try to lean on order files and wholesalers try to get out of long positions. Low grade lumber is one of few items to buck the downward trend as supply remains tight in all species. OSB mill prices are flat but wholesalers have been a little bit more willing to deal. The groundhog let us down again...Pray for sunshine.