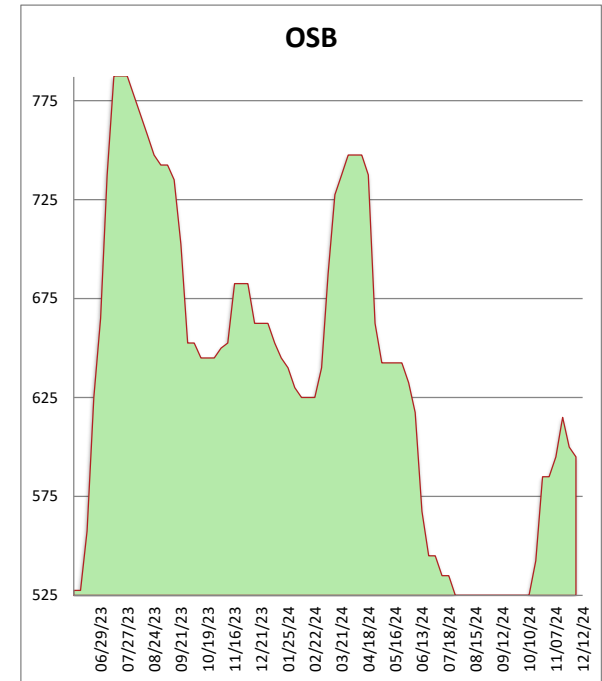
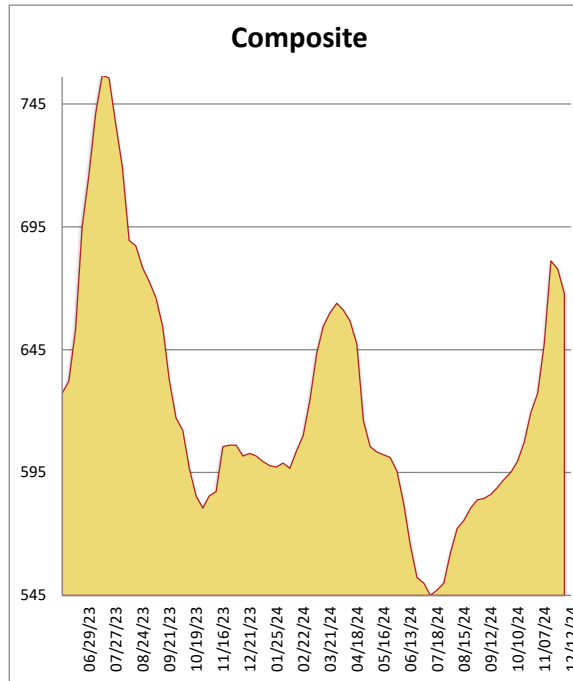


Rocky Mountain Framing Lumber Brief

12/12/24

All items are priced as a general market guide. Please call our sales office for specific quotes in your respective market.

	This Week	Weekly Change	Last Year
2X4 2/BTR KD DF/L	635	-20	575
2X6 2/BTR KD DF/L	745	-20	530
2X10 2/BTR KD DF/L	780	0	620
2X12 2/BTR KD DF/L	930	0	650
2X4 92-5/8 KD DF/L	540	-20	485
2X4 104-5/8 KD DF/L	575	-10	555
2X6 104-5/8 KD DF/L	615	-10	565
4X8 7/16 OSB	500	0	530
4X8 23/32 OSB T&G	690	-10	775
Composite Average	668	-10	587



The cooler market dynamics remained in play this week across all species and regions. The pending holidays are definitely looming in traders and buyers thoughts, even as the mills play the holiday curtailments card. Demand has tapered with the shift into winter, especially in the northern tier markets. Spruce, Yella Pine, and GDF are all giving back in dimension, SYP plywood is dropping, but fir and OSB are right behind. Secondaries are actively seeking offers on contract loads that are needing homes. The OSB mills and wholesalers are quietly hoping to cut some deals this week for fear of what next week holds. Distribution inventories remain lean by most accounts, but that could change if the tempo of business does not pick up in the coming weeks. Can't wait to see what 3 weeks of rest and healing does for Ashton Jeanty in the Fiesta Bowl. Should be more exciting than watching Travis Hunter in the Del Taco bowl, pffft.