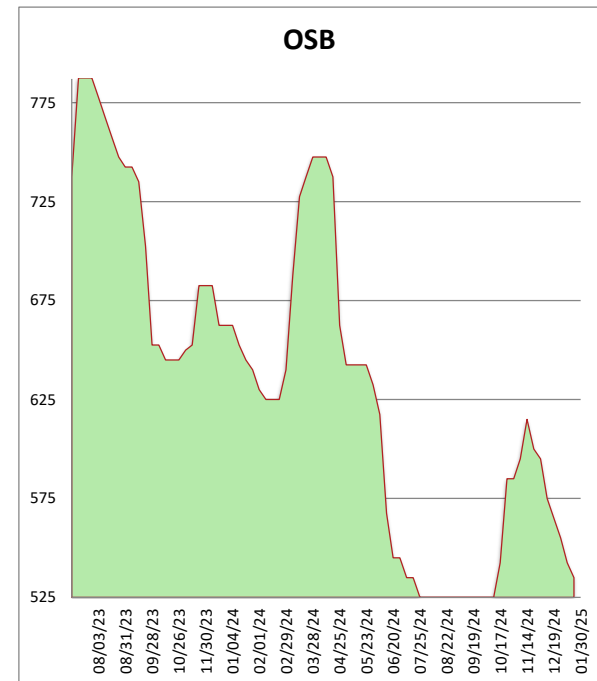
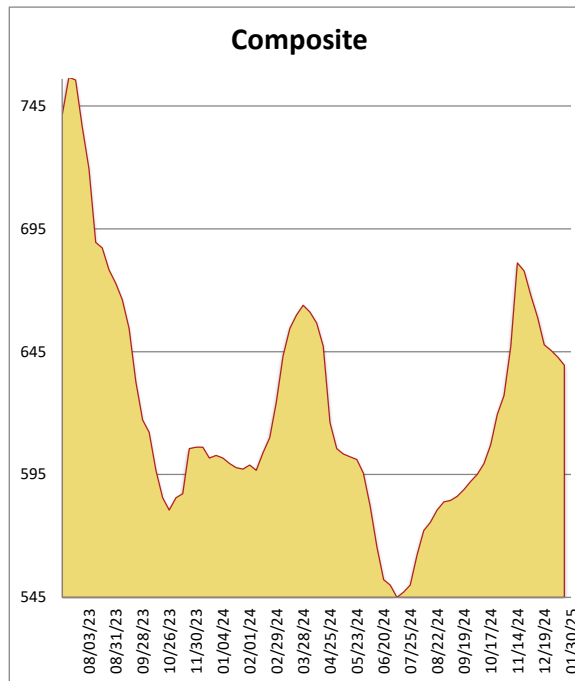


Rocky Mountain Framing Lumber Brief

01/30/25

All items are priced as a general market guide. Please call our sales office for specific quotes in your respective market.

| | This Week | Weekly Change | Last Year |
|---------------------|-----------|---------------|-----------|
| 2X4 2/BTR KD DF/L | 610 | -5 | 625 |
| 2X6 2/BTR KD DF/L | 720 | -5 | 580 |
| 2X10 2/BTR KD DF/L | 765 | 0 | 650 |
| 2X12 2/BTR KD DF/L | 910 | -5 | 650 |
| 2X4 92-5/8 KD DF/L | 520 | 0 | 485 |
| 2X4 104-5/8 KD DF/L | 555 | 0 | 555 |
| 2X6 104-5/8 KD DF/L | 605 | 0 | 555 |
| 4X8 7/16 OSB | 445 | -10 | 545 |
| 4X8 23/32 OSB T&G | 625 | -5 | 780 |
| Composite Average | 639 | -03 | 603 |



Markets fluttered throughout the week with little clear direction. Activity remains anemic as both buyers and sellers wait to see what February brings regarding tariffs on imported building materials. It's taxing on everyone. Or it could be. Or maybe not. At this point, it's anyone's best guess. More to come next week on this topic. Winter weather has northern markets at a crawl, while the south seems to be a mixed bag, with panels showing strength on the heels of last weeks little bump and lumber showing softness. Overall it is apparent that buyers are keeping PO books closed unless it's an absolute immediate need. This will likely create a round of replenishment buying by mid-Feb - but if Trump's tariffs are put in place it'll be time to Katy bar the door. To quote a wise old lumber mill manager, "May the Force be with you."