



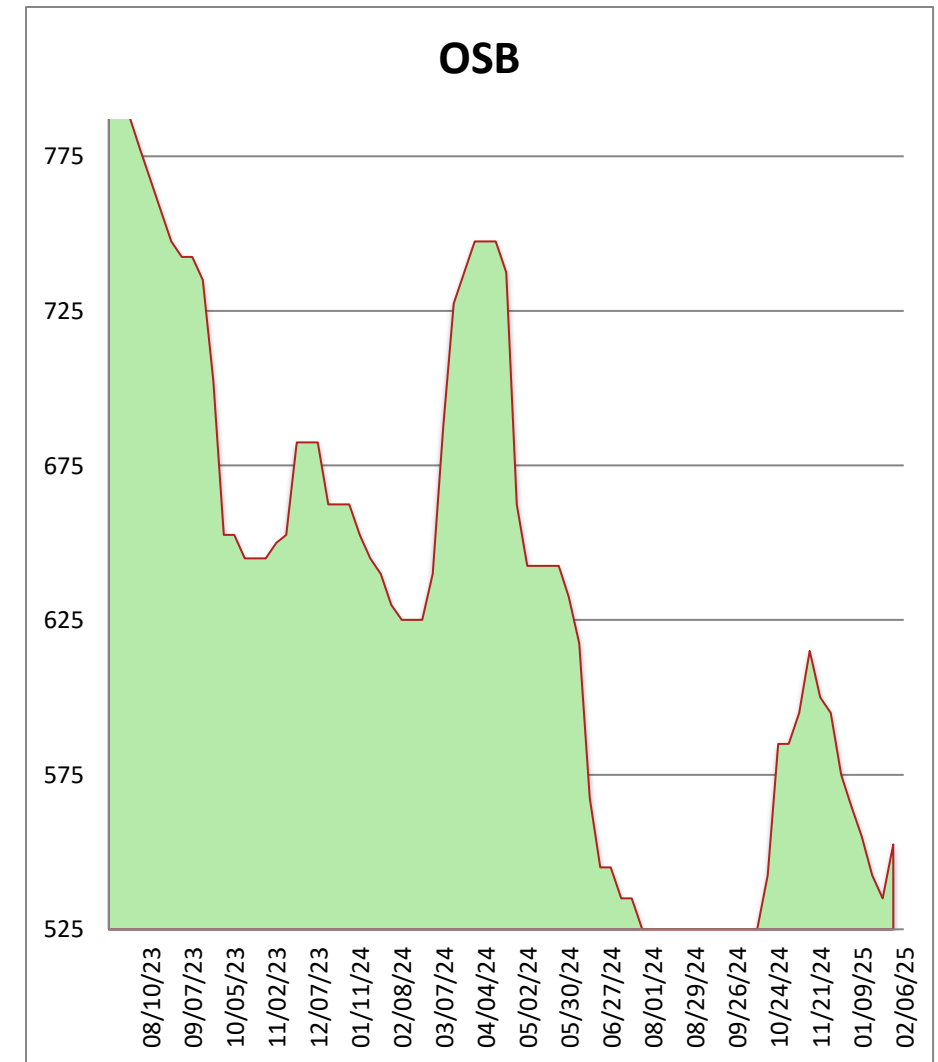
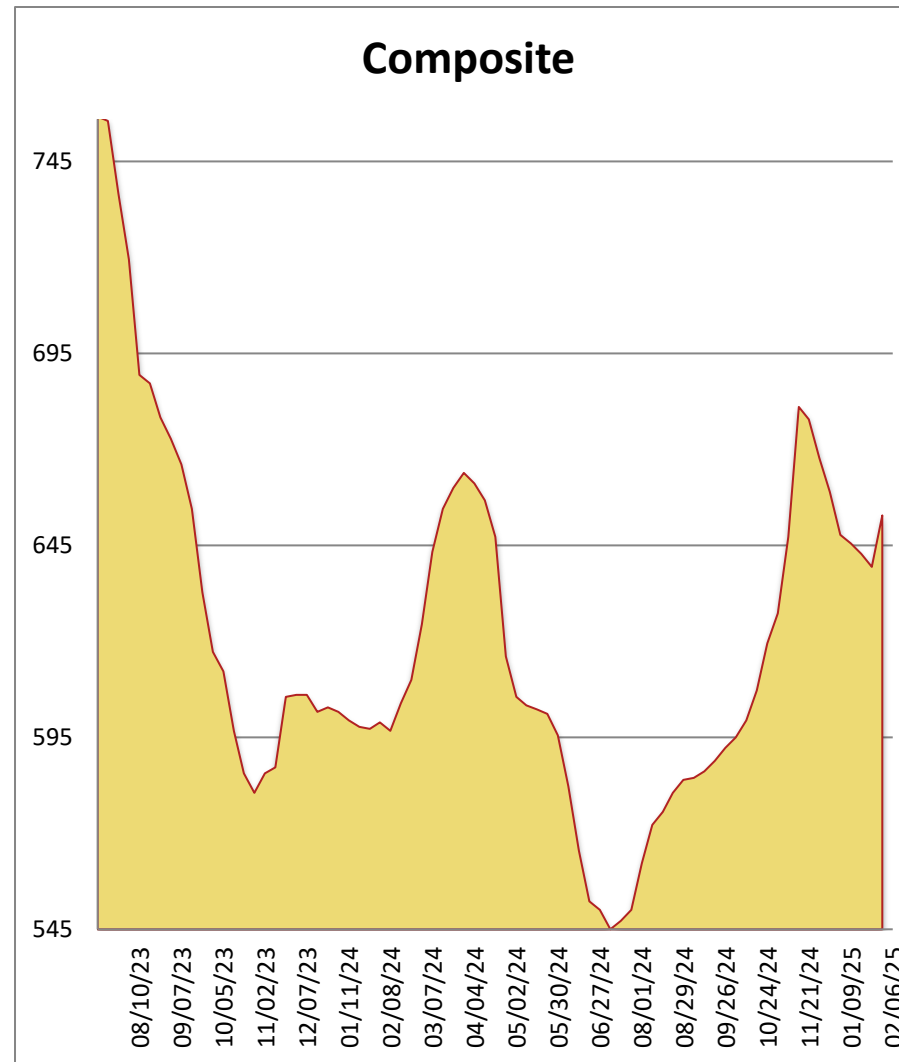
1-800-231-2310

Rocky Mountain Framing Lumber Brief

02/06/25

All items are priced as a general market guide. Please call our sales office for specific quotes in your respective market.

	This Week	Weekly Change	Last Year
2X4 2/BTR KD DF/L	620	10	625
2X6 2/BTR KD DF/L	740	20	580
2X10 2/BTR KD DF/L	785	20	650
2X12 2/BTR KD DF/L	915	5	650
2X4 92-5/8 KD DF/L	530	10	485
2X4 104-5/8 KD DF/L	565	10	550
2X6 104-5/8 KD DF/L	615	10	550
4X8 7/16 OSB	455	10	545
4X8 23/32 OSB T&G	650	25	780
Composite Average	653	13	602



Markets started off Monday with a flurry of last-minute purchasing and panic buying prior to Trump announcing a 30 day pause on tariffs with Canada and Mexico. As traders woke up Tuesday, they quickly realized markets had gone quiet and the chaos had dissipated. But it didn't stop mills from bumping levels all week and staying firm to their newly found trading levels. Studs reported 30-50/M increases in all species with SPF leading the charge. Come Thursday, multiple wholesalers were reporting most the sales activity from the pro dealers and retailers. Overall, the lumber market has been a bit like a Super Bowl this year—full of unexpected twists and high stakes! Get your 7-layer dip ready for Super Bowl Sunday as the Eagles take on the Chiefs!